

DID YOU KNOW?

Learn about ScopTEL features. Because Communication Matters!

Fixed/Mobile Convergence (FMC)

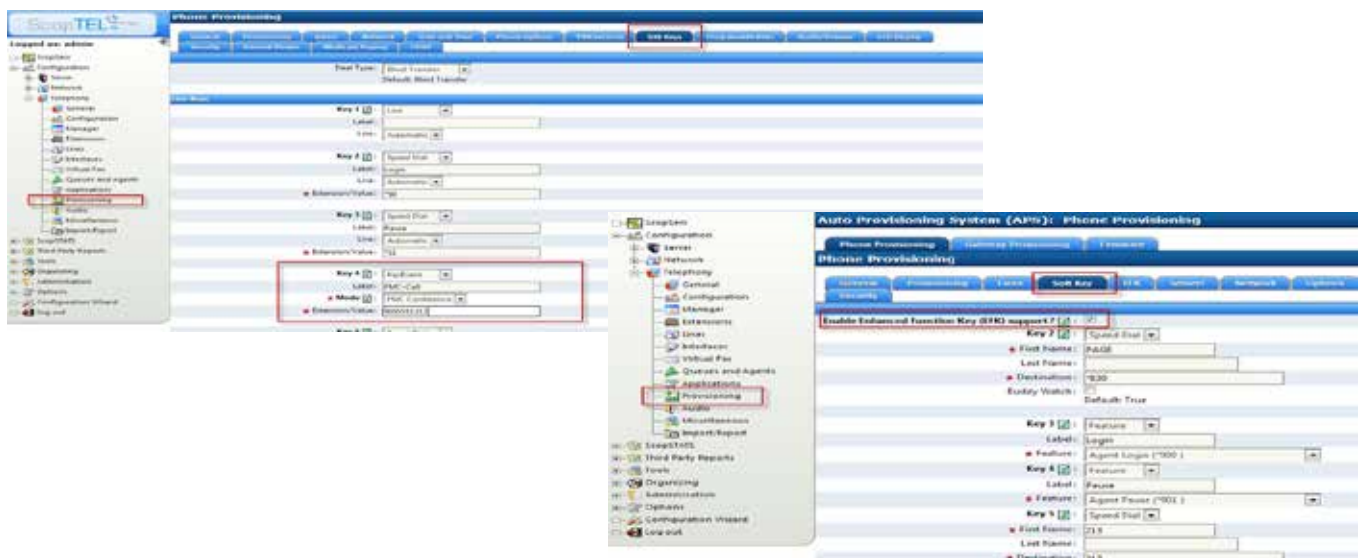
No need to stay at your desk to stay in contact with your colleagues or clients!

In today's reality, employees need to be mobile. More and more employees change locations during their workday, either in the workplace or various locations.

With Fixed/Mobile Convergence, the user has the ability to transfer a call to preprogrammed numbers, including cell phone numbers. For example, a user receives a call and must leave their workstation during the conversation. To remain connected with the caller, the user enters the function code corresponding to the FMC transfer on the keypad and selects one destination previously assigned. ScopTEL then conference bridges the pre-programmed destination to the active call.

Advantages

- ScopTEL FMC allows a supported SIP Desk phone to hand a call off to a mobile device.
- ScopTEL FMC also allows a mobile device to hand a call off to a ScopTEL extension or external number using PBX resources.
- In conjunction with Follow Me, FMC provides a single point of contact for any configured extension.
- If a desk phone answers the call first the user can execute a FMC Conference to send the caller to a pre-configured destination. Various possibilities exist depending on the setting previously saved.
- You can set up as many FMC destinations as there are unused keys on your phone (see examples below).



Learn more about FMC and get the entire walkthrough here: <http://bit.ly/Followme-FMC>

Our team of experts can help you! Contact us for more information or to find the reseller in your region.

Tel.: 1 866-722-3292 • info@scopserv.com

ScopServ International Inc. recommends using the latest ScopTEL version available. Update your software to get all features.